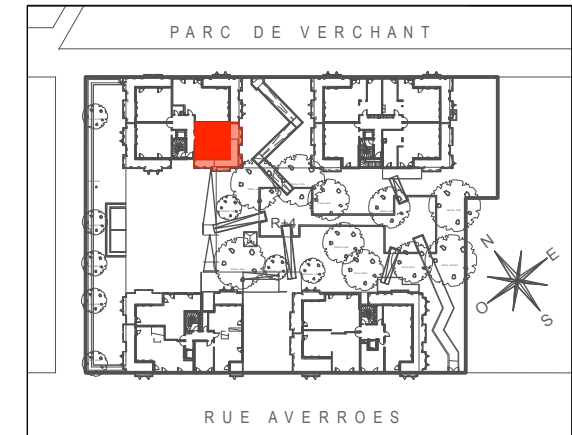
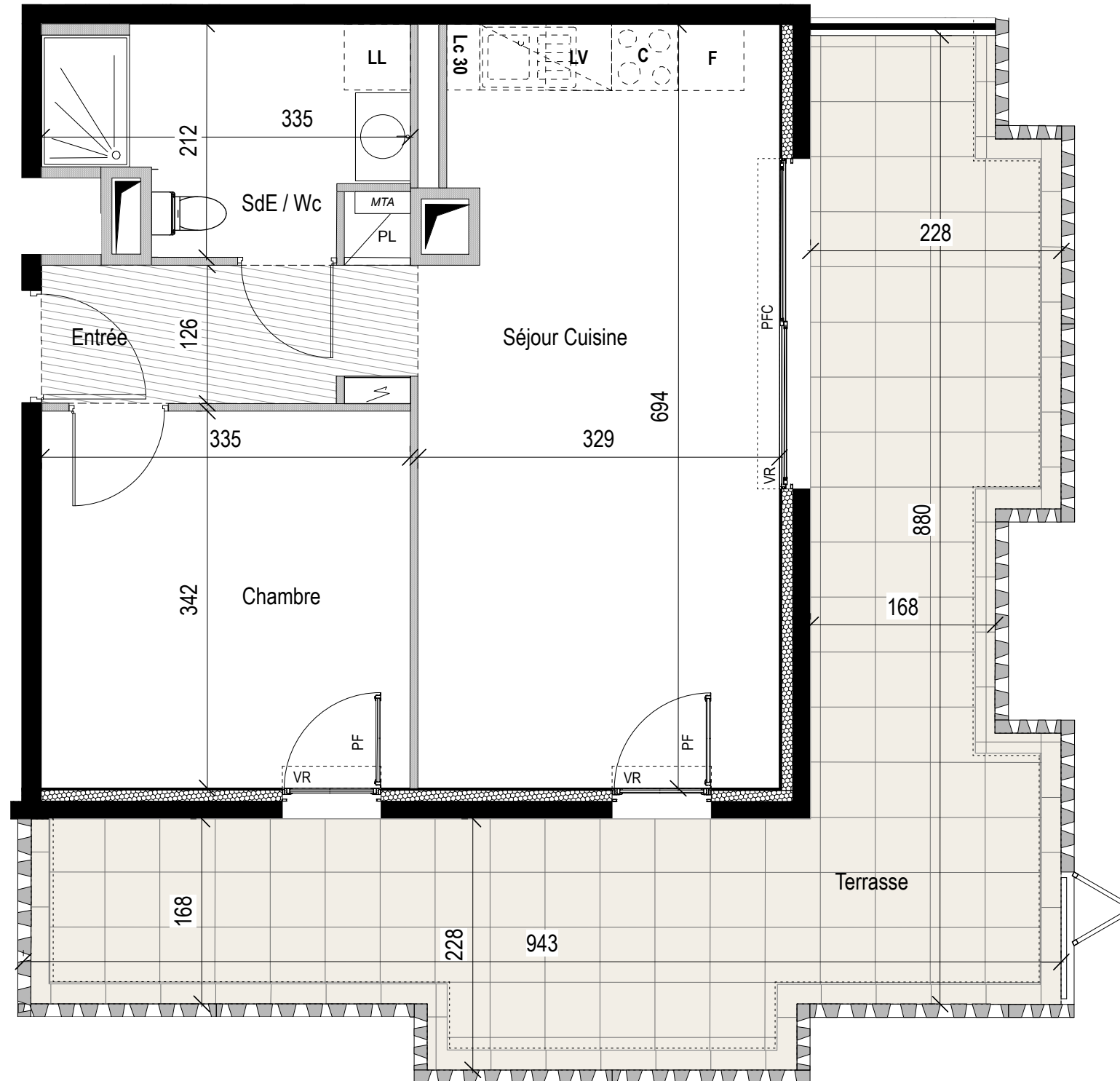


Résidence L'intemporelle

PLAN DE PRE-COMMERCIALISATION





Etage : R+4 Type : T2

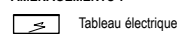
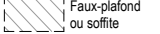

N° Appartement E44

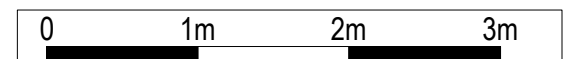
ENTREE + PL	4,40 m ²
SEJOUR CUISINE	22,00 m ²
CHAMBRE	11,50 m ²
SALLE D'EAU + Wc	5,70 m ²
SURFACE HABITABLE	43,60 m²
TERRASSE	32,00 m ²
SURFACE TOTALE	75,60 m²

LEGENDE

MENUISERIES :
 VR Volet roulant F Fenêtre AV Allege vitree
 PF Porte Fenêtre PFC Porte Fenêtre Couissante

FACADES TERRASSES :
 Garde Corps béton ajouré
 Garde corps métal et Volets aluminium ajourés coulissants repliables

AMENAGEMENTS :
 Tableau électrique  Faux-plafond ou soffite  Gaine technique



18/02/2021

Indice : 0